

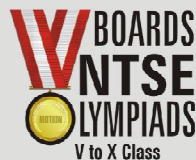
हमारा विश्वास... हर एक विद्यार्थी है स्वास

**JEE
MAIN
JAN
2020**

PAPER WITH SOLUTION

8th January 2020 _ SHIFT - II

MATHEMATICS



24000+
SELECTIONS SINCE 2007

JEE (Advanced)

5392

(Under 50000 Rank)

JEE (Main)

16241

NEET / AIIMS

1305

(since 2016)

NTSE / OLYMPIADS

1158

(5th to 10th class)

MOTION™

Nurturing potential through education

H.O. : 394, Rajeev Gandhi Nagar, Kota

www.motion.ac.in | ✉: info@motion.ac.in

1. If $I = \int_1^2 \frac{dx}{\sqrt{2x^3 - 9x^2 + 12x + 4}}$, then :

यदि $I = \int_1^2 \frac{dx}{\sqrt{2x^3 - 9x^2 + 12x + 4}}$ है, तो :

(1) $\frac{1}{9} < I^2 < \frac{1}{8}$ (2) $\frac{1}{6} < I^2 < \frac{1}{2}$ (3) $\frac{1}{16} < I^2 < \frac{1}{9}$ (4) $\frac{1}{8} < I^2 < \frac{1}{4}$

Sol. 1

$$I = \int_1^2 \frac{dx}{\sqrt{2x^3 - 9x^2 + 12x + 4}}$$

$$f(x) = \frac{1}{\sqrt{2x^3 - 9x^2 + 12x + 4}}$$

$$f'(x) = \frac{-1}{2} \frac{(6x^2 - 18x + 12)}{(2x^3 - 9x^2 + 12x + 4)^{3/2}}$$

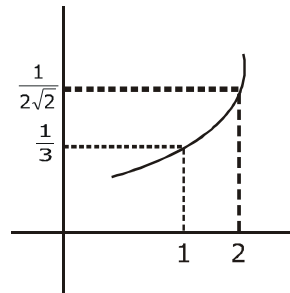
$$f'(x) = \frac{-6(x-1)(x-2)}{2(2x^3 - 9x^2 + 12x + 4)^{3/2}}$$

$$f(1) = \frac{1}{3} \text{ \& } f(2) = \frac{1}{\sqrt{8}}$$

it is increasing function

$$\therefore \frac{1}{3} < I < \frac{1}{\sqrt{8}}$$

$$\frac{1}{9} < I^2 < \frac{1}{8}$$



2. If a line, $y = mx + c$ is a tangent to the circle, $(x - 3)^2 + y^2 = 1$ and it is perpendicular to a line L_1 , where L_1 is the tangent to the circle, $x^2 + y^2 = 1$ at the point $\left(\frac{1}{\sqrt{2}}, \frac{1}{\sqrt{2}}\right)$; then :

यदि एक रेखा $y = mx + c$, वृत्त $(x - 3)^2 + y^2 = 1$ की एक स्पर्श रेखा है तथा यह एक रेखा L_1 पर लम्ब है, जहाँ L_1 वृत्त

$x^2 + y^2 = 1$ के बिन्दु $\left(\frac{1}{\sqrt{2}}, \frac{1}{\sqrt{2}}\right)$ पर स्पर्श रेखा है, तो :

(1) $c^2 - 7c + 6 = 0$ (2) $c^2 + 7c + 6 = 0$ (3) $c^2 - 6c + 7 = 0$ (4) $c^2 + 6c + 7 = 0$

Sol. 4

$(x - 3)^2 + y^2 = 1$, tangent is $y = mx + c$

for circle $x^2 + y^2 = 1$ tangent at $P\left(\frac{1}{\sqrt{2}}, \frac{1}{\sqrt{2}}\right)$

24000+
SELECTIONS SINCE 2007

JEE (Advanced)	JEE (Main)	NEET / AIIMS	NTSE / OLYMPIADS
5392	16241	1305	1158
(Under 50000 Rank)		(since 2016)	(5th to 10th class)

H.O. : 394, Rajeev Gandhi Nagar, Kota
Toll Free : 1800-212-1799
www.motion.ac.in | info@motion.ac.in

from $T = 0$

$$\frac{1}{\sqrt{2}}x + \frac{1}{\sqrt{2}}y - 1 = 0$$

$$x + y - \sqrt{2} = 0 \quad \dots\dots L_1$$

$x + y - \sqrt{2} = 0 \xrightarrow{+r} x - y + \lambda = 0 \rightarrow$ This is tangent to the circle $(x - 3)^2 + y^2 = 1$
apply $r = \rho$

$$1 = \left| \frac{3 - 0 + \lambda}{\sqrt{2}} \right| \Rightarrow |\lambda + 3| = \sqrt{2}$$

$$\lambda = -3 \pm \sqrt{2}$$

$$(\lambda + 3)^2 = 2$$

$$\lambda^2 + 9 + 6\lambda - 2 = 0$$

$$c^2 + 6c + 7 = 0$$

3. Which of the following statements is a tautology ?

निम्न में से कौन सा कथन एक पुनरुक्ति है ?

(1) $p \vee (\sim q) \rightarrow p \wedge q$ (2) $\sim (p \vee \sim q) \rightarrow p \vee q$

(3) $\sim (p \vee \sim q) \rightarrow p \wedge q$ (4) $\sim (p \wedge \sim q) \rightarrow p \vee q$

Sol. 2

p	q	$\sim p$	$\sim q$	$p \vee \sim q$	$p \wedge q$	$A \rightarrow B$	$\sim (p \vee \sim q)$	$p \vee q$	$\sim (p \vee \sim q) \rightarrow (p \vee q)$
T	T	F	F	T	T	T	F	T	T
T	F	F	T	T	F	F	F	T	T
F	T	T	F	F	F	T	T	T	T
F	F	T	T	T	F	F	F	F	T

Tautology

4. Let $\alpha = \frac{-1 + i\sqrt{3}}{2}$. If

$$a = (1 + \alpha) \sum_{k=0}^{100} \alpha^{2k} \text{ and } b = \sum_{k=0}^{100} \alpha^{3k}, \text{ then}$$

a and b are the roots of the quadratic equation :

माना $\alpha = \frac{-1 + i\sqrt{3}}{2}$ है। यदि

$$a = (1 + \alpha) \sum_{k=0}^{100} \alpha^{2k} \text{ तथा } b = \sum_{k=0}^{100} \alpha^{3k}, \text{ तो}$$

a तथा b निम्न में से किस द्विघात समीकरण के मूल हैं ?

(1) $x^2 - 102x + 101 = 0$

(2) $x^2 - 101x + 100 = 0$

(3) $x^2 + 102x + 101 = 0$

(4) $x^2 + 101x + 100 = 0$

**Increase Your Score
for JEE Main April'2020**

उन्नति
17 JAN 2020

Below 97 percentile in JEE Main (Jan-2020)
Tenure: 62 Days | Schedule: 5 Classes Per Day

Fees - ₹ 27500 Including GST

उत्कर्ष
15 JAN 2020

percentile between 97.0 to 98.99
in JEE Main (Jan-2020)

Fees - ₹ 22000 Including GST

उत्थान
17 JAN 2020

99 percentile and above
in JEE Main (Jan-2020)

Fees - ₹ 11000
score 160-200

Fees - ₹ 5500
score 200-240

Fees - ₹ 0
score above 240

Sol. 1

$$\alpha = -\frac{1}{2} + i\frac{\sqrt{3}}{2} \Rightarrow \alpha = \omega$$

$$a = (1 + \alpha) \sum_{k=0}^{100} \alpha^{2k}$$

$$a = (1 + \alpha)(1 + \alpha^2 + \alpha^4 + \alpha^6 + \dots + \alpha^{200})$$

$$a = (1 + \alpha) \left\{ \frac{1 \cdot \left[(\alpha^2)^{101} - 1 \right]}{\alpha^2 - 1} \right\} \Rightarrow a = \frac{(\omega + 1)(\omega^{202} - 1)}{(\omega^2 - 1)}$$

$$\Rightarrow a = \frac{(\omega + 1)(\omega - 1)}{(\omega + 1)(\omega - 1)} \Rightarrow a = 1$$

$$b = \sum_{k=0}^{100} \alpha^{3k} = 1 + \alpha^3 + \alpha^6 + \dots + \alpha^{300}$$

$$b = 1 + \omega^3 + \omega^6 + \dots + \omega^{300} \Rightarrow b = 1 + 1 + \dots 101 \text{ times}$$

$$b = 101$$

$$x^2 - (a + b)x + (ab) = 0$$

$$x^2 - (102)x + 101 = 0$$

5. let $\vec{a} = \hat{i} - 2\hat{j} + \hat{k}$ and $\vec{b} = \hat{i} - \hat{j} + \hat{k}$ be two vectors. If \vec{c} is a vector such that $\vec{b} \times \vec{c} = \vec{b} \times \vec{a}$ and $\vec{c} \cdot \vec{a} = 0$, then $\vec{c} \cdot \vec{b}$ is equal to :

माना दो सदिश $\vec{a} = \hat{i} - 2\hat{j} + \hat{k}$ तथा $\vec{b} = \hat{i} - \hat{j} + \hat{k}$ है। यदि एक सदिश \vec{c} इस प्रकार है कि $\vec{b} \times \vec{c} = \vec{b} \times \vec{a}$ तथा $\vec{c} \cdot \vec{a} = 0$ हैं, तो $\vec{c} \cdot \vec{b}$ बराबर है :

(1) $\frac{1}{2}$

(2) $-\frac{1}{2}$

(3) $-\frac{3}{2}$

(4) -1

Sol. 2

$$\vec{a} = \hat{i} - 2\hat{j} + \hat{k}$$

$$\vec{b} = \hat{i} - \hat{j} + \hat{k}$$

$$|\vec{a}| = \sqrt{6} ; |\vec{b}| = \sqrt{3} \quad \& \quad \vec{a} \cdot \vec{b} = 4$$

$$\vec{b} \times \vec{c} = \vec{b} \times \vec{a}$$

$$(\vec{b} \times \vec{c}) - (\vec{b} \times \vec{a}) = 0$$

$$\vec{b} \times (\vec{c} - \vec{a}) = 0$$

$$\vec{b} \parallel (\vec{c} - \vec{a}) \Rightarrow (\vec{c} - \vec{a}) = \lambda \vec{b}$$

24000+
SELECTIONS SINCE 2007

JEE (Advanced)

5392

JEE (Main)

16241

(Under 50000 Rank)

NEET / AIIMS

1305

(since 2016)

NTSE / OLYMPIADS

1158

(5th to 10th class)

H.O. : 394, Rajeev Gandhi Nagar, Kota

Toll Free : 1800-212-1799

www.motion.ac.in | ✉: info@motion.ac.in

$$\vec{c} = \vec{a} + \lambda \vec{b}$$

Now $\vec{c} \cdot \vec{a} = 0$

$$\Rightarrow \vec{c} \cdot \vec{a} = \vec{a} \cdot \vec{a} + \lambda (\vec{a} \cdot \vec{b})$$

$$0 = |\vec{a}|^2 + \lambda (\vec{a} \cdot \vec{b})$$

$$\lambda = \frac{-|\vec{a}|^2}{\vec{a} \cdot \vec{b}} = \frac{-6}{4} = \frac{-3}{2}$$

$$\therefore \vec{c} = \vec{a} - \frac{3}{2} \vec{b}$$

$$\vec{c} = (\hat{i} - 2\hat{j} + \hat{k}) - \frac{3}{2}(\hat{i} - \hat{j} + \hat{k})$$

$$\vec{c} = -\frac{1}{2}\hat{i} - \frac{1}{2}\hat{j} - \frac{1}{2}\hat{k} \Rightarrow C = -\frac{1}{2}(\hat{i} + \hat{j} + \hat{k})$$

$$\vec{b} \cdot \vec{c} = -\frac{1}{2}(\hat{i} + \hat{j} + \hat{k})(\hat{i} - \hat{j} + \hat{k})$$

$$\vec{b} \cdot \vec{c} = -\frac{1}{2}$$

6. If α and β be the coefficients of x^4 and x^2 respectively in the expansion of $(x + \sqrt{x^2 - 1})^6 + (x - \sqrt{x^2 - 1})^6$, then :

यदि $(x + \sqrt{x^2 - 1})^6 + (x - \sqrt{x^2 - 1})^6$ के प्रसार में x^4 तथा x^2 के गुणांक क्रमशः α तथा β हैं, तो :

(1) $\alpha - \beta = 60$ (2) $\alpha - \beta = -132$ (3) $\alpha + \beta = 60$ (4) $\alpha + \beta = -30$

Sol.

$$(x+a)^n + (x-a)^n = 2(T_1 + T_3 + T_5 + \dots)$$

$$(x + \sqrt{x^2 - 1})^6 + (x - \sqrt{x^2 - 1})^6 = 2[T_1 + T_3 + T_5 + T_7]$$

$$= 2[{}^6C_0 x^6 + {}^6C_2 x^4(x^2 - 1) + {}^6C_4 x^2(x^2 - 1)^2 + {}^6C_6 x^0(x^2 - 1)^3]$$

$$= 2[x^6 + 15(x^6 - x^4) + 15x^2(x^4 + 1 - 2x^2) + [x^6 - 3x^4 + 3x^2 - 1]]$$

$$= 2[x^6(2 + 15 + 15 + 1) + x^4(-15 - 30 - 3) + x^2(15 + 3)]$$

coefficient of $x^4 = \alpha = -96$

$\beta = 36$

$\alpha - \beta = -96 - 36 = -132$

**Increase Your Score
for JEE Main April'2020**

उत्कर्ष
15 JAN 2020

percentile between 97.0 to 98.99
in JEE Main (Jan-2020)

Fees - ₹ 22000 Including GST

उन्नति
17 JAN 2020

Below 97 percentile in JEE Main (Jan-2020)

Tenure: 62 Days | Schedule: 5 Classes Per Day

Fees - ₹ 27500 Including GST

उत्थान
17 JAN 2020

99 percentile and above
in JEE Main (Jan-2020)

Fees - ₹ 11000
score 160-200

Fees - ₹ 5500
score 200-240

Fees - ₹ 0
score above 240

7. If a hyperbola passes through the point P(10,16) and it has vertices at $(\pm 6, 0)$, then the equation of the normal to it at P is :

यदि एक अतिपरवलय बिन्दु P(10, 16) से होकर जाता है तथा इसके शीर्ष $(\pm 6, 0)$ पर हैं, तो P पर इसके अभिलम्ब का समीकरण है :

(1) $x + 2y = 42$ (2) $x + 3y = 58$ (3) $2x + 5y = 100$ (4) $3x + 4y = 94$

Sol. 3

Let hyperbola $\frac{x^2}{a^2} - \frac{y^2}{b^2} = 1$

vertices $(\pm a, 0) = (\pm 6, 0) \Rightarrow a = 6$

$$\frac{x^2}{a^2} - \frac{y^2}{b^2} = 1 \xrightarrow{(10,16)} \frac{(10)^2}{(6)^2} - \frac{(16)^2}{b^2} = 1 \Rightarrow \frac{256}{b^2} = \frac{100}{36} - 1$$

$$\frac{256}{b^2} = \frac{64}{36}$$

$$b^2 = \frac{256 \times 36}{64} \Rightarrow b^2 = 36 \times 4$$

$$b^2 = 9 \times 16$$

$$b = 12$$

\therefore required hyperbola is $\frac{x^2}{36} - \frac{y^2}{144} = 1$

equation of normal will be

$$\frac{a^2x}{x_1} + \frac{b^2y}{y_1} = a^2 + b^2$$

at P(10,16) normal is

$$\frac{36x}{10} + \frac{144y}{16} = 36 + 144$$

$$\frac{18x}{5} + 9y = 180$$

$$18x + 45y = 900$$

$$2x + 5y = 100$$

8. $\lim_{x \rightarrow 0} \frac{\int_0^x t \sin(10t) dt}{x}$ is equal to :

$$\lim_{x \rightarrow 0} \frac{\int_0^x t \sin(10t) dt}{x} \text{ बराबर है :}$$

(1) $\frac{1}{10}$

(2) $-\frac{1}{5}$

(3) $\frac{-1}{10}$

(4) 0

Sol. 4

$$\lim_{x \rightarrow 0} \frac{\int_0^x t \sin(10t) dt}{x}$$

$$\frac{0}{0} \text{ form}$$

∴ apply newton leibniz rule

$$\lim_{x \rightarrow 0} \frac{x \cdot \sin(10x) - 0}{1} = 0$$

9. The system of linear equations

$$\lambda x + 2y + 2z = 5$$

$$2\lambda x + 3y + 5z = 8$$

$$4x + \lambda y + 6z = 10 \text{ has :}$$

(1) no solution when $\lambda = 2$

(3) no solution when $\lambda = 8$

रैखिक समीकरण निकाय

$$\lambda x + 2y + 2z = 5$$

$$2\lambda x + 3y + 5z = 8$$

$$4x + \lambda y + 6z = 10$$

(1) का कोई हल नहीं है जब $\lambda = 2$

(3) का कोई हल नहीं है जब $\lambda = 8$

(2) infinitely many solutions when $\lambda = 2$

(4) a unique solution when $\lambda = -8$

(2) के अनन्त हल हैं जब $\lambda = 2$

(4) का मात्र एक हल है जब $\lambda = -8$

Sol. 1

$$\lambda x + 2y + 2z = 5$$

$$2\lambda x + 3y + 5z = 8$$

$$4x + \lambda y + 6z = 10$$

$$\Delta = \begin{vmatrix} \lambda & 2 & 2 \\ 2\lambda & 3 & 5 \\ 4 & \lambda & 6 \end{vmatrix}$$

$$\Delta = \lambda(18 - 5\lambda) - 2(12\lambda - 20) + 2(2\lambda^2 - 12)$$

$$\Delta = 18\lambda - 5\lambda^2 - 24\lambda + 40 + 4\lambda^2 - 24$$

$$\Delta = -\lambda^2 - 6\lambda + 16$$

$$\Delta = -\lambda^2 + 2\lambda - 8\lambda + 16$$

$$\Delta = -\lambda(\lambda - 2) - 8(\lambda - 2)$$

$$\Delta = -(\lambda + 8)(\lambda - 2)$$

for no solutions $\Delta = 0 \Rightarrow \lambda = -8, \lambda = 2$

when $\lambda = 2$

$$\Delta_1 = \begin{vmatrix} 2 & 2 & 2 \\ 4 & 3 & 5 \\ 4 & 2 & 6 \end{vmatrix} = 2(18 - 10) - 2(24 - 20) + 2(8 - 12)$$

$$= 2(2) - 2(4) + 2(-4)$$

$$\Delta_1 \neq 0$$

∴ at $\lambda = 2$ no solutions

**Increase Your Score
for JEE Main April'2020**

उत्कर्ष
15 JAN 2020

percentile between 97.0 to 98.99
in JEE Main (Jan-2020)

Fees - ₹ 22000 Including GST

उन्नति
17 JAN 2020

Below 97 percentile in JEE Main (Jan-2020)

Tenure: 62 Days | Schedule: 5 Classes Per Day

Fees - ₹ 27500 Including GST

उत्थान
17 JAN 2020

99 percentile and above
in JEE Main (Jan-2020)

Fees - ₹ 11000
score 160-200

Fees - ₹ 5500
score 200-240

Fees - ₹ 0
score above 240

10. If the 10th term of an A.P. is $\frac{1}{20}$ and its 20th term is $\frac{1}{10}$, then the sum of its first 200 terms is :

यदि एक समान्तर श्रेणी का 10 वां पद $\frac{1}{20}$ है तथा इसका 20 वां पद $\frac{1}{10}$ है, तो इसके प्रथम 200 पदों का योग है :

- (1) 100 (2) $50\frac{1}{4}$ (3) 50 (4) $100\frac{1}{2}$

Sol. 4

$$T_{10} = a + 9d = \frac{1}{20} \quad \dots(1)$$

$$T_{20} = a + 19d = \frac{1}{10} \quad \dots(2)$$

Equation (2) - (1)

$$-10d = \frac{1}{20} - \frac{1}{10}$$

$$-10d = \frac{1}{20} - \frac{2}{20} = \frac{-1}{20}$$

$$d = \frac{1}{200}$$

$$a + \frac{9}{200} = \frac{1}{20} \Rightarrow a = \frac{1}{20} - \frac{9}{200}$$

$$a = \frac{10}{200} - \frac{9}{200} \Rightarrow a = \frac{1}{200}$$

$$\therefore a = d = \frac{1}{200}$$

$$S_{200} = \frac{200}{2} \left[\frac{2}{200} + (200-1) \cdot \frac{1}{200} \right] = 100 \left[\frac{2}{200} + \frac{199}{200} \right]$$

$$S_{200} = \frac{201}{2} = 100\frac{1}{2}$$

11. Let $f : (1,3) \rightarrow \mathbb{R}$ be a function defined by $f(x) = \frac{x[x]}{1+x^2}$, where $[x]$ denotes the greatest integer $\leq x$. Then the range of f is :

माना $f : (1,3) \rightarrow \mathbb{R}$ एक फलन है, जो $f(x) = \frac{x[x]}{1+x^2}$, द्वारा परिभाषित है जहां $[x]$ महत्तम पूर्णांक $\leq x$ को दर्शाता है। तो

f का परिसर है :

- (1) $\left(\frac{2}{5}, \frac{1}{2}\right) \cup \left(\frac{3}{5}, \frac{4}{5}\right]$ (2) $\left(\frac{2}{5}, \frac{4}{5}\right]$ (3) $\left(\frac{3}{5}, \frac{4}{5}\right]$ (4) $\left(\frac{2}{5}, \frac{3}{5}\right] \cup \left(\frac{3}{4}, \frac{4}{5}\right]$

Sol. 1

$$f: (1,3) \rightarrow \mathbb{R}, f(x) = \frac{x[x]}{1+x^2}$$

24000+
SELECTIONS SINCE 2007

JEE (Advanced)

5392

JEE (Main)

16241

(Under 50000 Rank)

NEET / AIIMS

1305

(since 2016)

NTSE / OLYMPIADS

1158

(5th to 10th class)

H.O. : 394, Rajeev Gandhi Nagar, Kota

Toll Free : 1800-212-1799

www.motion.ac.in | ✉: info@motion.ac.in

$$f(x) = \begin{cases} \frac{x}{1+x^2}, & x \in (1,2) \\ \frac{2x}{1+x^2}, & x \in [2,3) \end{cases}$$

$$f'(x) = \begin{cases} \frac{(1+x^2)(1) - x(2x)}{(1+x^2)^2}, & x \in (1,2) \\ \frac{(1+x^2)(2) - 2x(2x)}{(1+x^2)^2}, & x \in [2,3) \end{cases}$$

$$f'(x) = \begin{cases} \frac{1-x^2}{1+x^2}, & x \in (1,2) \\ \frac{1-2x^2}{1+x^2}, & x \in [2,3) \end{cases}$$

∴ f(x) is decreasing function

$$\therefore R_f \in \left(\frac{2}{5}, \frac{1}{2}\right) \cup \left(\frac{6}{10}, \frac{4}{5}\right]$$

12. The differential equation of the family of curves, $x^2 = 4b(y + b)$, $b \in R$, is :

वक्रों $x^2 = 4b(y + b)$, $b \in R$ के कुल का अवकल समीकरण है :

(1) $x(y')^2 = 2yy' - x$ (2) $xy'' = y'$ (3) $x(y')^2 = x - 2yy'$ (4) $x(y')^2 = x + 2yy'$

Sol. 4

$$x^2 = 4b(y + b), b \in R$$

$$x^2 = 4by + 4b^2$$

$$2x = 4by' + 0$$

$$y' = \frac{x}{2b}$$

$$\Rightarrow b = \frac{x}{2y'}$$

∴ differential equation is

$$x^2 = 4 \cdot y \cdot \frac{x}{2y'} + 4 \left(\frac{x}{2y'}\right)^2$$

$$x^2 = \frac{2xy}{y'} + \frac{x^2}{(y')^2}$$

$$x = \frac{2y}{y'} + \frac{x}{(y')^2}$$

$$x(y')^2 = 2yy' + x$$

**Increase Your Score
for JEE Main April'2020**

उत्कर्ष
15 JAN 2020

percentile between 97.0 to 98.99
in JEE Main (Jan-2020)

Fees - ₹ 22000 Including GST

उन्नति
17 JAN 2020

Below 97 percentile in JEE Main (Jan-2020)
Tenure: 62 Days | Schedule: 5 Classes Per Day

Fees - ₹ 27500 Including GST

उत्थान
17 JAN 2020

99 percentile and above
in JEE Main (Jan-2020)

Fees - ₹ 11000
score 160-200

Fees - ₹ 5500
score 200-240

Fees - ₹ 0
score above 240

- 13.** Let S be the set of all functions $f:[0,1] \rightarrow \mathbb{R}$, which are continuous on $[0,1]$ and differentiable on $(0,1)$. Then for every f in S , there exists a $c \in (0,1)$, depending on f , such that :
माना सभी फलनों $f : [0,1] \rightarrow \mathbb{R}$, जो कि $[0,1]$ पर संतत हैं तथा $(0,1)$ पर अवकलनीय हैं, का समुच्चय S है। तो S में प्रत्येक f के लिए f पर निर्भर एक $c \in (0,1)$ का अस्तित्व इस प्रकार है कि :

$$(1) \frac{f(1) - f(c)}{1 - c} = f'(c) \qquad (2) |f(c) - f(1)| < (1 - c) |f'(c)|$$

$$(3) |f(c) - f(1)| < |f'(c)| \qquad (4) |f(c) + f(1)| < (1+c)|f'(c)|$$

Sol. 4
Use LMVT theorem & check option

- 14.** The mean and variance of 20 observations are found to be 10 and 4, respectively. On rechecking, it was found that an observation 9 was incorrect and the correct observation was 11. Then the correct variance is :

20 प्रेक्षणों के माध्य तथा प्रसरण क्रमशः 10 तथा 4 पाये गये। पुनः जांच करने पर पाया गया कि एक प्रेक्षण 9 गलत था तथा सही प्रेक्षण 11 था। तो सही प्रसरण है :

(1) 4.01 (2) 4.02 (3) 3.98 (4) 3.99

Sol. 4
Let 20 observation be x_1, x_2, \dots, x_{20}

given Mean = $\frac{x_1 + x_2 + \dots + x_{20}}{20} = 10$

$x_1 + x_2 + \dots + x_{20} = 200$
Now, $x_1 + x_2 + \dots + x_{20} - 9 + 11 \Rightarrow 202$

$V_{ar} = \frac{\sum x_i^2}{n} - (\bar{x})^2$

$4 = \frac{x_1^2 + x_2^2 + \dots + x_{20}^2}{20} - 10^2$

$2080 = x_1^2 + x_2^2 + \dots + x_{20}^2$

Now, $x_1^2 + x_2^2 + \dots + x_{20}^2 - 81 + 121 \Rightarrow 2080 + 40 = 2120$
new variance will be

$\frac{2120}{20} - \left(\frac{202}{20}\right)^2 = 3.99$

- 15.** The area (in sq. units) of the region $\{(x,y) \in \mathbb{R}^2 : x^2 \leq y \leq 3 - 2x\}$, is :
क्षेत्र $\{(x,y) \in \mathbb{R}^2 : x^2 \leq y \leq 3 - 2x\}$ का क्षेत्रफल (वर्ग इकाई में) है :

(1) $\frac{31}{3}$ (2) $\frac{34}{3}$ (3) $\frac{29}{3}$ (4) $\frac{32}{3}$

Sol. 4
 $y = x^2$ & $y = 3 - 2x$
 $x^2 = 3 - 2x$

$$\begin{aligned}x^2 + 2x - 3 &= 0 \\x^2 + 3x - x - 3 &= 0 \\x(x + 3) - (x + 3) &= 0 \\(x - 1)(x + 3) &= 0 \\x &= 1, -3\end{aligned}$$

$$\text{required area} = \int_{-3}^1 (\text{line} - \text{parabola}) dx$$

$$= \int_{-3}^1 [(3 - 2x) - x^2]$$

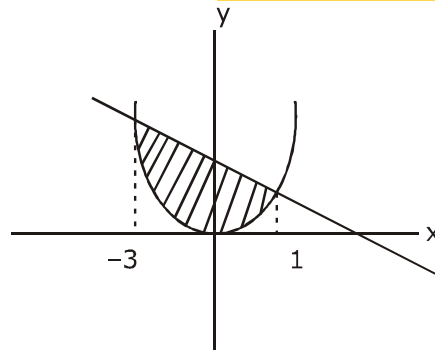
$$= \left(3x - \frac{2x^2}{2} - \frac{x^3}{3} \right)_{-3}^1$$

$$\text{Area} = \left(3x - x^2 - \frac{x^3}{3} \right)_{-3}^1$$

$$= \left[3(1) - (1)^2 - \frac{1}{3} \right] - \left[3(-3) - (-3)^2 - \frac{(-3)^3}{3} \right]$$

$$= \left(2 - \frac{1}{3} \right) - (-18 + 9)$$

$$= \frac{5}{3} + 9 = \frac{32}{3}$$



16. The length of the perpendicular from the origin, on the normal to the curve, $x^2 + 2xy - 3y^2 = 0$ at the point (2,2) is

वक्र $x^2 + 2xy - 3y^2 = 0$ के बिन्दु (2, 2) पर खींचे गये अभिलम्ब पर मूल बिन्दु से डाले गये लम्ब की लम्बाई है :

- (1) 2 (2) $\sqrt{2}$ (3) $2\sqrt{2}$ (4) $4\sqrt{2}$

Sol.

$$\begin{aligned}x^2 + 2xy - 3y^2 &= 0 \\2x + 2y + 2xy' - 6yy' &= 0 \\x + y + xy' - 3yy' &= 0 \\y'(x - 3y) &= -(x + y)\end{aligned}$$

$$\frac{dy}{dx} = \frac{x + y}{3y - x}$$

$$\text{Slope of (N), } -\frac{dx}{dy} = \frac{x - 3y}{x + y}$$

$$\therefore \left(-\frac{dx}{dy} \right)_{(2,2)} = \frac{2 - 6}{2 + 2} = -1$$

**Increase Your Score
for JEE Main April'2020**

उत्कर्ष
15 JAN 2020

percentile between 97.0 to 98.99
in JEE Main (Jan-2020)

Fees - ₹ 22000 Including GST

उन्नति
17 JAN 2020

Below 97 percentile in JEE Main (Jan-2020)
Tenure: 62 Days | Schedule: 5 Classes Per Day

Fees - ₹ 27500 Including GST

उत्थान
17 JAN 2020

99 percentile and above
in JEE Main (Jan-2020)

Fees - ₹ 11000 score 160-200 | Fees - ₹ 5500 score 200-240 | Fees - ₹ 0 score above 240

∴ equation of normal at (2,2) is
 $y - 2 = -(x - 2)$
 $x + y - 4 = 0$
 ∴ distance from (0,0) will be

$$p = \left| \frac{0+0-4}{\sqrt{2}} \right| = 2\sqrt{2}$$

17. Let S be the set of all real roots of the equation, $3^x(3^x - 1) + 2 = |3^x - 1| + |3^x - 2|$. Then S :
- (1) is a singleton (2) contains at least four elements.
 (3) contains exactly two elements (4) is an empty set.

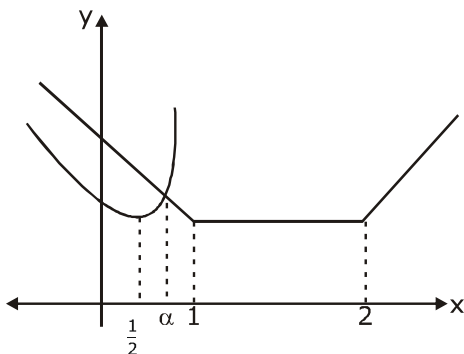
माना समीकरण $3^x(3^x - 1) + 2 = |3^x - 1| + |3^x - 2|$ के सभी वास्तविक मूलों का समुच्चय S है। तो S :

- (1) एक ही अवयव वाला समुच्चय है। (2) में कम से कम चार अवयव हैं।
 (3) में मात्र दो अवयव हैं (4) एक रिक्त समुच्चय है

Sol. 1

$$3^x(3^x - 1) + 2 = |3^x - 1| + |3^x - 2|$$

put $3^x = t$
 $t(t - 1) + 2 = |t - 1| + |t - 2|$
 $t^2 - t + 2 = |t - 1| + |t - 2|$
 from graph



let α is real solutions

$$\alpha = 3^x$$

$$x = \log_3 \alpha \quad \therefore \text{only one solution}$$

∴ singleton set

18. If $A = \begin{pmatrix} 2 & 2 \\ 9 & 4 \end{pmatrix}$ and $I = \begin{pmatrix} 1 & 0 \\ 0 & 1 \end{pmatrix}$, then $10A^{-1}$ is equal to :

यदि $A = \begin{pmatrix} 2 & 2 \\ 9 & 4 \end{pmatrix}$ तथा $I = \begin{pmatrix} 1 & 0 \\ 0 & 1 \end{pmatrix}$ हैं, तो $10A^{-1}$ बराबर है :

- (1) $A - 6I$ (2) $4I - A$ (3) $6I - A$ (4) $A - 4I$

Sol. 1

$$A = \begin{bmatrix} 2 & 2 \\ 9 & 4 \end{bmatrix} \text{ and } I = \begin{bmatrix} 1 & 0 \\ 0 & 1 \end{bmatrix}$$

$$10A^{-1} = ?$$

According to Cayley Hamilton equation

$$|A - \lambda I| = 0$$

$$\begin{vmatrix} 2-\lambda & 2 \\ 9 & 4-\lambda \end{vmatrix} = 0$$

$$(2 - \lambda)(4 - \lambda) - 18 = 0$$

$$8 - 2\lambda - 4\lambda + \lambda^2 - 18 = 0$$

$$\lambda^2 - 6\lambda - 10 = 0$$

$$\therefore A^2 - 6A - 10 = 0$$

$$A^{-1}(A^2) - 6A^{-1}A - 10A^{-1} = 0$$

$$A - 6I - 10A^{-1} = 0$$

$$10A^{-1} = A - 6I$$

19. The mirror image of the point (1,2,3) in a plane is $\left(-\frac{7}{3}, -\frac{4}{3}, -\frac{1}{3}\right)$. Which of the following point lies on this plane ?

बिन्दु (1,2,3) का एक समतल में प्रतिबिम्ब (mirror image), $\left(-\frac{7}{3}, -\frac{4}{3}, -\frac{1}{3}\right)$ है। निम्न में से कौन सा बिन्दु इस समतल

पर स्थित है ?

(1) (1,1,1)

(2) (1,-1,1)

(3) (-1,-1,-1)

(4) (-1,-1,1)

Sol.

2

for required plane

$$\vec{n} \parallel \overline{AB}$$

$$\vec{n} = -\frac{7}{3} - 1, \frac{-4}{3} - 2, \frac{-1}{3} - 3$$

$$\vec{n} = \frac{-10}{3}, \frac{-10}{3}, \frac{-10}{3}$$

$$\text{D.r of } \vec{n} = 1, 1, 1$$

$$\text{Also mid- point of A \& B is } M \equiv \left(\frac{-\frac{7}{3} + 1}{2}, \frac{-\frac{4}{3} + 2}{2}, \frac{-\frac{1}{3} + 3}{2} \right)$$

$$M \equiv \left(\frac{-4}{6}, \frac{2}{6}, \frac{8}{6} \right)$$

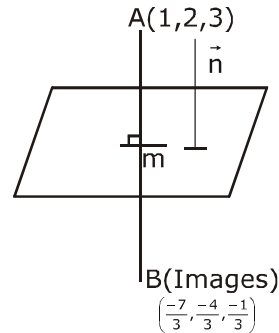
$$M \equiv \left(\frac{-2}{3}, \frac{1}{3}, \frac{4}{3} \right)$$

\therefore equation of required plane B

$$\vec{r} \cdot \vec{n} = \vec{a} \cdot \vec{n}$$

$$\vec{r} \cdot (\hat{i} + \hat{j} + \hat{k}) = -\frac{2}{3} + \frac{1}{3} + \frac{4}{3}$$

$$x + y + z = 1$$



**Increase Your Score
for JEE Main April'2020**

उत्कर्ष
15 JAN 2020

percentile between 97.0 to 98.99
in JEE Main (Jan-2020)

Fees - ₹ 22000 Including GST

उन्नति
17 JAN 2020

Below 97 percentile in JEE Main (Jan-2020)
Tenure: 62 Days | Schedule: 5 Classes Per Day

Fees - ₹ 27500 Including GST

उत्थान
17 JAN 2020

99 percentile and above
in JEE Main (Jan-2020)

Fees - ₹ 11000
score 160-200

Fees - ₹ 5500
score 200-240

Fees - ₹ 0
score above 240

20. Let A and B be two events such that the probability that exactly one of them occurs is $\frac{2}{5}$ and the probability that A or B occurs is $\frac{1}{2}$, then the probability of both of them occur together is :

माना A तथा B दो घटनाएँ इस प्रकार हैं कि दोनों में से मात्र एक के होने की प्रायिकता $\frac{2}{5}$ है तथा A या B के होने की प्रायिकता

$\frac{1}{2}$ है, तो दोनों के एक साथ होने की प्रायिकता है :

- (1) 0.02 (2) 0.01 (3) 0.20 (4) 0.10

Sol. 4

$$P(\text{exactly one}) = \frac{2}{5}$$

$$P(A) + P(B) - 2P(A \cap B) = \frac{2}{5} \quad \dots(1)$$

$$P(A \text{ or } B) = P(A \cup B) = \frac{1}{2}$$

$$P(A) + P(B) - P(A \cap B) = \frac{1}{2} \quad \dots(2)$$

$$P(A \cap B) = ?$$

Solve (1) - (2)

$$-P(A \cap B) = \frac{2}{5} - \frac{1}{2}$$

$$P(A \cap B) = \frac{1}{2} - \frac{2}{5}$$

$$= \frac{5}{10} - \frac{4}{10} = \frac{1}{10}$$

$$= P(A \cap B) = 0.10$$

21. The number of 4 letters words (with or without meaning) that can be formed from the eleven letters of the word 'EXAMINATION' is

शब्द 'EXAMINATION' के ग्यारह अक्षरों से बन सकने वाले 4 अक्षरों के शब्दों (अर्थ वाले तथा अर्थविहीन) की संख्या है.....।

Sol. 2454

EXAMINATION

(AA)(II)(NN)(EXMOT)

to form four letter words

(1) All samenot possible

(2) 1 different, 3 same.....not possible

$$(3) 2 \text{ different, } 2 \text{ same} \dots\dots\dots {}^3C_1 \times {}^7C_2 \times \frac{4!}{2!} = 3 \times \frac{7 \times 6 \times 5!}{2!5!} \times \frac{4 \times 3 \times 2!}{2!} = 63 \times 12 = 756$$

$$(4) 2 \text{ same, } 2 \text{ same} \dots\dots\dots {}^3C_2 \times \frac{4!}{2!2!} = 3 \times \frac{4 \times 3 \times 2!}{2.2} = 18$$

(5) All different ${}^8C_4 \times 4! = \frac{8.7.6.5.4!}{4.3.2.4!} \times 4! = 56 \times 30 = 1680$

Total = 2454

22. If $\frac{\sqrt{2} \sin \alpha}{\sqrt{1 + \cos 2\alpha}} = \frac{1}{7}$ and $\sqrt{\frac{1 - \cos 2\beta}{2}} = \frac{1}{\sqrt{10}}$, $\alpha, \beta \in \left(0, \frac{\pi}{2}\right)$, then $\tan(\alpha + 2\beta)$ is equal to :

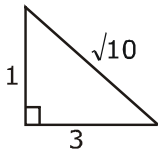
यदि $\frac{\sqrt{2} \sin \alpha}{\sqrt{1 + \cos 2\alpha}} = \frac{1}{7}$ तथा $\sqrt{\frac{1 - \cos 2\beta}{2}} = \frac{1}{\sqrt{10}}$, $\alpha, \beta \in \left(0, \frac{\pi}{2}\right)$, हैं, तो $\tan(\alpha + 2\beta)$ बराबर है.....।

Sol. 1

$$\frac{\sqrt{2} \sin \alpha}{\sqrt{1 + \cos 2\alpha}} = \frac{1}{7} \text{ and } \sqrt{\frac{1 - \cos 2\beta}{2}} = \frac{1}{\sqrt{10}}$$

$$\frac{\sqrt{2} \sin \alpha}{\sqrt{2} \cos \alpha} = \frac{1}{7} \text{ \& } \frac{\sqrt{2} \sin \beta}{\sqrt{2}} = \frac{1}{\sqrt{10}}$$

$$\tan \alpha = \frac{1}{7} \qquad \sin \beta = \frac{1}{\sqrt{10}}$$



$$\tan \beta = \frac{1}{3}$$

$$\therefore \tan 2\beta = \frac{2 \tan \beta}{1 - \tan^2 \beta} = \frac{2 \left(\frac{1}{3}\right)}{1 - \frac{1}{9}} = \frac{2/3}{8/9}$$

$$\tan 2\beta = \frac{2}{3} \cdot \frac{9}{8} = \frac{3}{4}$$

$$= \tan(\alpha + 2\beta)$$

$$= \frac{\tan \alpha + \tan 2\beta}{1 - \tan \alpha \cdot \tan 2\beta}$$

$$= \frac{\frac{1}{7} + \frac{3}{4}}{1 - \frac{1}{7} \cdot \frac{3}{4}} = \frac{\frac{4 + 21}{28}}{\frac{28 - 3}{28}} = \frac{25}{25} = 1$$

**Increase Your Score
for JEE Main April'2020**

उत्कर्ष
15 JAN 2020

percentile between 97.0 to 98.99
in JEE Main (Jan-2020)

Fees - ₹ 22000 Including GST

उन्नति
17 JAN 2020

Below 97 percentile in JEE Main (Jan-2020)
Tenure: 62 Days | Schedule: 5 Classes Per Day

Fees - ₹ 27500 Including GST

उत्थान
17 JAN 2020

99 percentile and above
in JEE Main (Jan-2020)

Fees - ₹ 11000
score 160-200

Fees - ₹ 5500
score 200-240

Fees - ₹ 0
score above 240

23. The sum $\sum_{n=1}^7 \frac{n(n+1)(2n+1)}{4}$ is equal to :

योगफल $\sum_{n=1}^7 \frac{n(n+1)(2n+1)}{4}$ बराबर है

Sol. 504

$$\begin{aligned} & \sum_{n=1}^7 \frac{n(n+1)(2n+1)}{4} \\ & \frac{1}{4} \sum_{n=1}^7 n(n+1)(2n+1) \\ & \frac{1}{4} \sum_{n=1}^7 ((n^2+n)(2n+1)) \\ & = \frac{1}{4} \sum_{n=1}^7 (2n^3 + 3n^2 + n) \\ & \frac{1}{2} \sum_{n=1}^7 n^3 + \frac{3}{4} \sum_{n=1}^7 n^2 + \frac{1}{4} \sum_{n=1}^7 n \\ & \Rightarrow \frac{1}{2} \left(\frac{7(7+1)}{2} \right)^2 + \frac{3}{4} \left(\frac{7(7+1)(14+1)}{6} \right) + \frac{1}{4} \cdot \frac{7(8)}{2} \\ & = \frac{1}{2} \frac{49 \cdot 8 \cdot 8}{4} + \frac{3 \cdot 7 \cdot 8 \cdot 15}{4 \cdot 6} + \frac{1}{4} \frac{7 \cdot 8}{2} \\ & = (49)(8) + (15 \times 7) + (7) \\ & = 392 + 105 + 7 = 504 \end{aligned}$$

24. Let $f(x)$ be a polynomial of degree 3 such that $f(-1) = 10$, $f(1) = -6$, $f(x)$ has a critical point at $x = -1$ and $f'(x)$ has a critical point at $x = 1$. Then $f(x)$ has a local minima at $x = \dots\dots\dots$
माना घात 3 का एक बहुपद $f(x)$ इस प्रकार है कि $f(-1) = 10$, $f(1) = -6$, $f(x)$ का एक क्रांतिक बिन्दु $x = -1$ है तथा $f'(x)$ का एक क्रांतिक बिन्दु $x = 1$ है। तो $f(x)$ का एक स्थानीय निम्ननिष्ठ है $x = \dots\dots\dots$ है।

Sol. 3

$$\begin{aligned} f(x) &= ax^3 + bx^2 + cx + d \\ f(-1) &= 10, \quad f(1) = -6 \\ -a + b - c + d &= 10 \quad \dots(i) \\ a + b + c + d &= -6 \quad \dots(ii) \\ \text{add (i) + (ii)} \\ 2(b + d) &= 4 \\ b + d &= 2 \quad \dots(iii) \\ f'(x) &= 3ax^2 + 2bx + c \\ f'(-1) &= 0 \\ 3a - 2b + c &= 0 \quad \dots(iv) \\ f''(x) &= 6ax + 2b \\ f''(1) &= 0 \\ 6a + 2b &= 0 \quad \dots(v) \end{aligned}$$

add (iv) + (v)
 $9a + c = 0$ (vi)
 $b = -3a$

$$c + 9 \left(\frac{-b}{3} \right) = 0$$

$$c = 3b$$

$$f(x) = \frac{-b}{3}x^3 + bx^2 + 3bx + (2 - b)$$

$$f'(x) = -bx^2 + 2bx + 3b = 0$$

$$x^2 - 2x - 3 = 0$$

$$(x - 3)(x + 1) = 0$$

$$x = 3, -1 \text{ Minima}$$

$$\text{at } x = 3$$

25. Let a line $y = mx (m > 0)$ intersect the parabola, $y^2 = x$ at a point P, other than the origin. Let the tangent to it at P meet the x - axis at the point Q. If area $(\Delta OPQ) = 4$ sq. units, then m is equal to

माना एक रेखा $y = mx (m > 0)$, परवलय $y^2 = x$ को मूल बिन्दु के अतिरिक्त एक बिन्दु P पर काटती है। माना P पर इसकी स्पर्श रेखा x-अक्ष को बिन्दु Q पर मिलती है। यदि (ΔOPQ) का क्षेत्रफल 4 वर्ग इकाई है, तो m बराबर है

Sol. 0.5

let $p(t^2, t)$

Tangent at $P(t^2, t)$

$$ty = \frac{x + t^2}{2}$$

$$2ty = x + t^2 \rightarrow \text{equation of tangent}$$

$$Q = (-t^2, 0)$$

$O(0,0)$

$$\Delta(OPQ) = 4$$

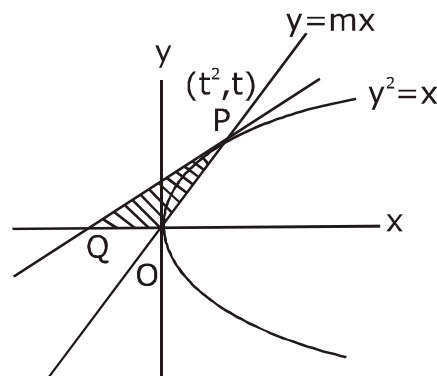
$$\frac{1}{2} \begin{vmatrix} 0 & 0 & 1 \\ t^2 & t & 1 \\ -t^2 & 0 & 1 \end{vmatrix} = 4$$

$$|t^3| = 8$$

$$t = 2$$

$$\therefore 4y = x + 4 \text{ is tangent } \therefore P \text{ is } (4,2)$$

$$y = mx \Rightarrow 2 = 4m \Rightarrow m = \frac{1}{2} \Rightarrow 0.5$$



**Increase Your Score
for JEE Main April'2020**

उत्कर्ष
15 JAN 2020

percentile between 97.0 to 98.99
in JEE Main (Jan-2020)

Fees - ₹ 22000 Including GST

उन्नति
17 JAN 2020

Below 97 percentile in JEE Main (Jan-2020)
Tenure: 62 Days | Schedule: 5 Classes Per Day

Fees - ₹ 27500 Including GST

उत्थान
17 JAN 2020

99 percentile and above
in JEE Main (Jan-2020)

Fees - ₹ 11000
score 160-200

Fees - ₹ 5500
score 200-240

Fees - ₹ 0
score above 240

कर लो अब पूरी तैयारी

चूक ना जाये इस बारी

INCREASE YOUR SCORE for JEE Main April 2020

उत्थान 17th JAN 2020

99 percentile and above
in JEE Main (Jan-2020)

उत्कर्ष 15th JAN 2020

percentile between 97.0 to 98.99
in JEE Main (Jan-2020)

उन्नति 17th JAN 2020

Below 97 percentile
in JEE Main (Jan-2020)

MOTIONTM

Nurturing potential through education

Toll Free : 1800-212-1799